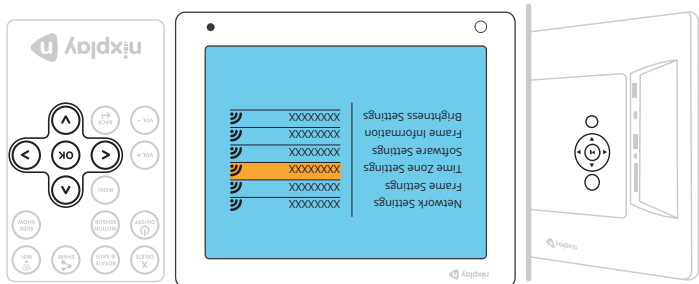


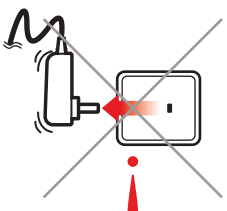
select the **CONNECT** button, and then



Frame, press **OK** to select your WiFi. Use the **UP/DOWN** arrows on the Remote or the 4-way key on the back of the Cloud

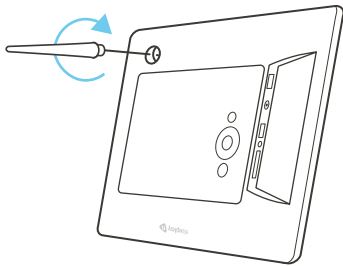
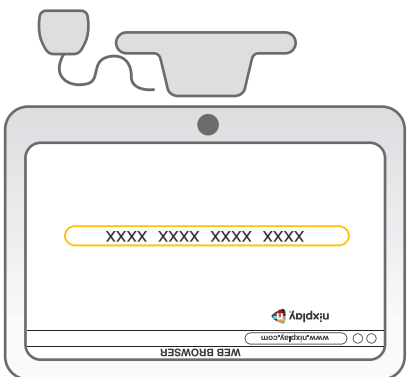
5

**6** **WAIT FOR THE UPDATE:** Once your Cloud Frame is connected, it may automatically update to ensure your Cloud Frame has the latest features and functions. It is critical that you do not switch your Cloud Frame off during this process.

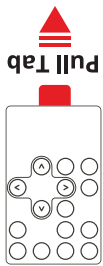


Please Wait... 10 min approx

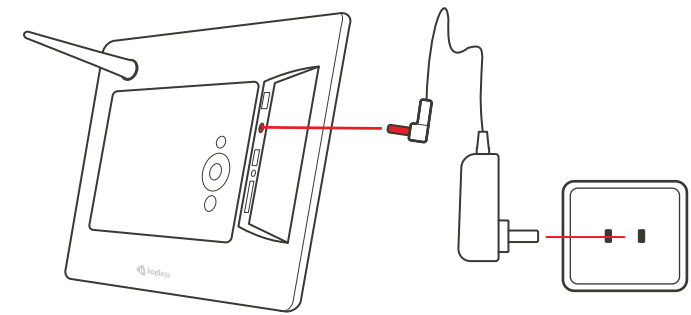
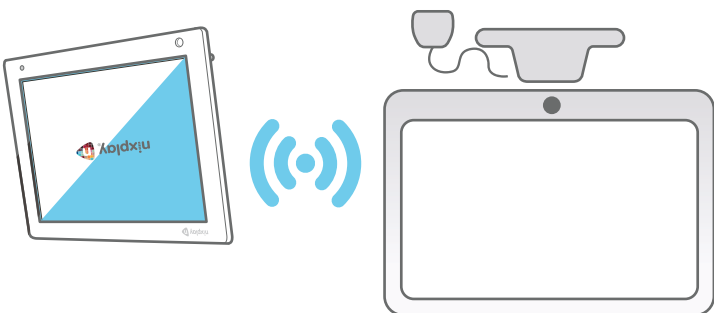
**7** **16 DIGIT SERIAL NUMBER:** Your Frame should display a 16 digit serial number that you will need to enter on the [www.nixplay.com](http://www.nixplay.com) website, after step 8.



**1** **ASSEMBLE CLOUD FRAME:** Screw in stand.

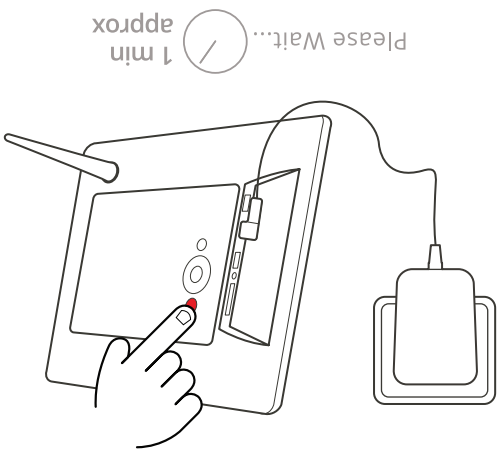


**2** It's important to **PLACE YOUR CLOUD FRAME NEXT TO A COMPUTER FOR SET UP.**



**3** **PLUG IN THE POWER ADAPTOR TO YOUR CLOUD FRAME:** Then plug your Cloud Frame into a power source.

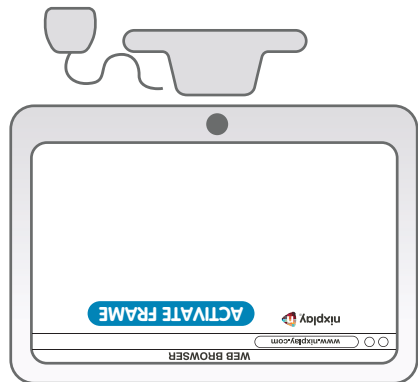
**4** **PRESS THE POWER BUTTON:** This is located on the back of your Cloud Frame. Please be patient as your Cloud Frame may take a minute to load.



Please Wait... 1 min approx

**8** **ON YOUR COMPUTER:** Please login to [www.nixplay.com](http://www.nixplay.com) to create your account. Click the **ACTIVATE FRAME** button on the website.

*Please ensure that you're using the latest browser version.*



**FANTASTIC!**  
YOU'RE NOW READY TO PAIR YOUR FRAME TO ITS OWN NIXPLAY CLOUD ACCOUNT